



Diamondhead Sure-IoC™ Denture

featuring the ATLANTIS™ Conus Abutment

4 easy appointments

Appointment #1

After implants are ready for restoration, a fixture level impression using the proper impression copings will be taken. Doctor should send an opposing impression and a bite or temp denture if possible. If preference is to have lab place SynCone® caps in denture, a verified open-tray impression or verification jig will be required.

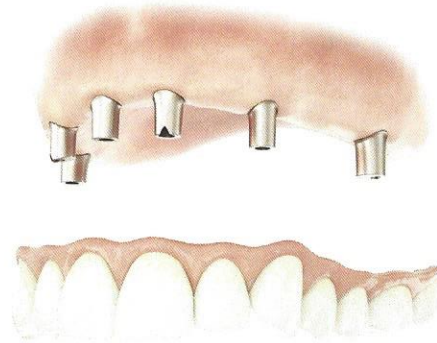
Schedule next appointment after: 5 days in lab

Appointment #2

Lab will pour the impressions with the proper analogs and fabricate a bite rim. This rim will be used to record centric occlusion and vertical, along with midline. A shade will also be taken at this appointment.

NOTE: This step can be omitted if a denture or duplicate denture was sent at the first appointment.

Schedule next appointment after: 7 days in lab



Appointment #3

Lab will fabricate the abutments. The teeth will be set up according to the records taken at the previous appointment. Pick up SynCone® caps into wax try-in.

During this visit the abutments will be transferred from the model to the patient, and the appliance will be tried in.

A check bite should be taken to make sure everything is in proper occlusion.

Any resets needed will add additional appointments.

Schedule next appointment after: 7 days in lab

Appointment #4

Lab will process with reinforcement mesh, then finish and polish.

Office will transfer the abutments one more time, then seat the appliance, check for fit and occlusion, and make any necessary adjustments.

ANTIS™

Removable prosthesis with the comfort of a fixed restoration

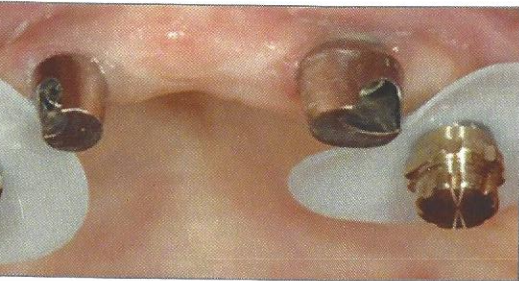
ANTIS™ Conus concept

For all major implant systems, the **ATLANTIS Conus concept** is an overdenture solution for a friction-fit, non-resilient prosthetic restoration for fully edentulous patients.

Designed using the patented ATLANTIS VAD (Virtual Abutment Design) software parallel abutments and margin levels as close to the soft tissue as possible.

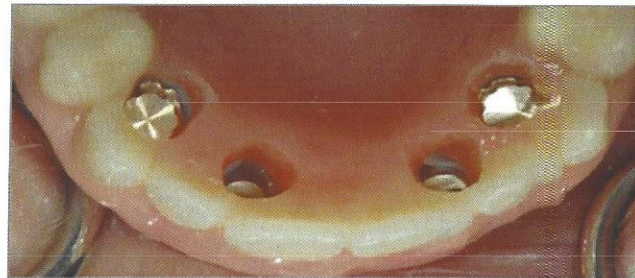
Designed to fit SynCone® caps, ensuring a tightly-seated final restoration and minimizing micro-movement.

Provides a comfortable implant-supported, palate-free prosthesis designed for optimal chewing function, sense of taste and oral hygiene.



are placed and polymerization sleeves are cut out any undercuts.

Arnold Rosen, MBA, DDS



The prosthesis is inserted.

Now
available



For more information, contact your local DENTSPLY
representative or visit www.dentsplyimplants.com.

DENTSPLY
IMPLANTS